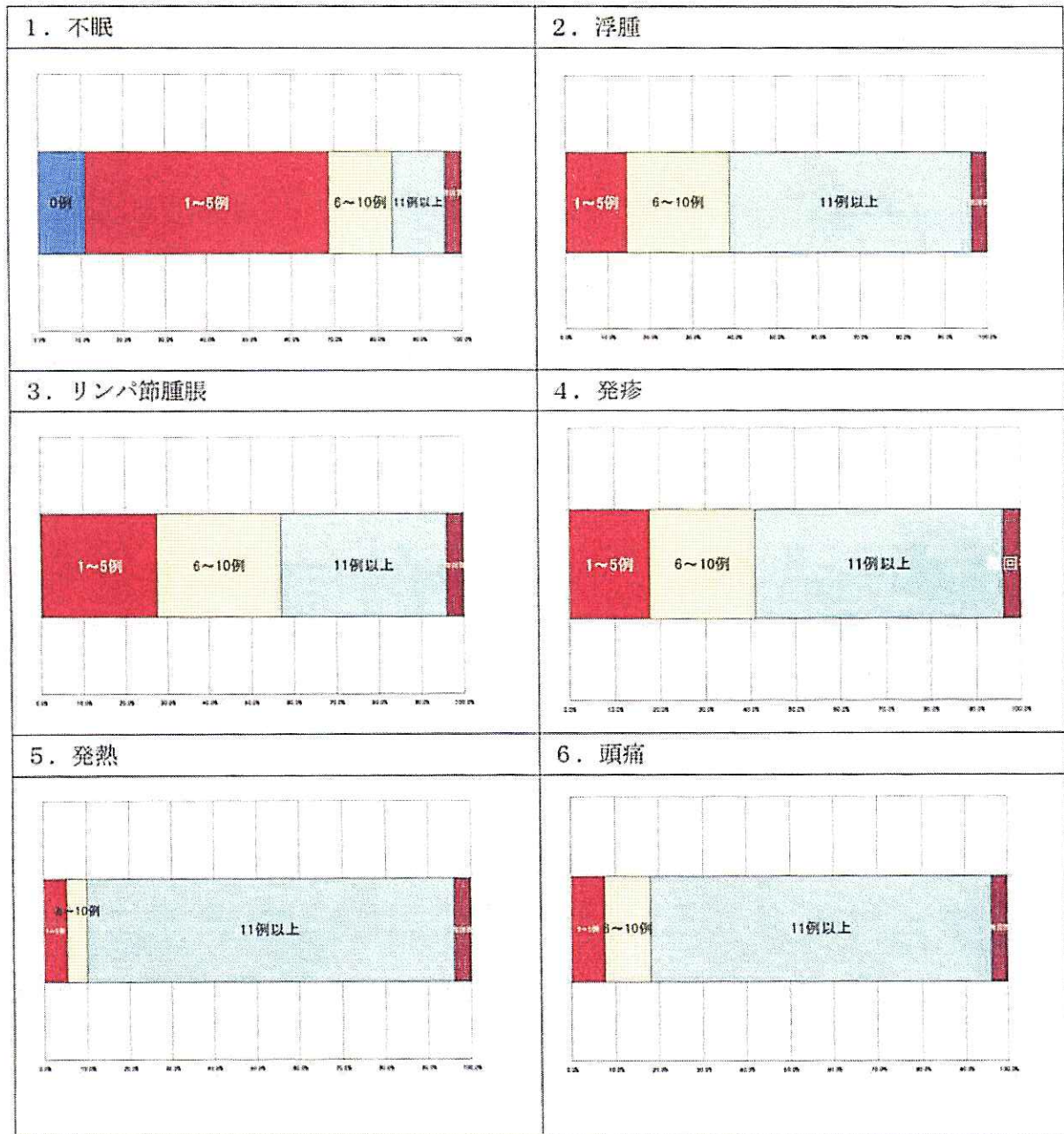
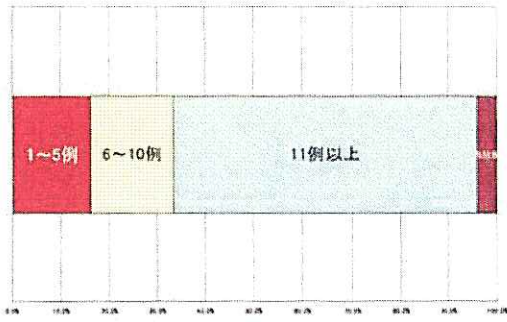


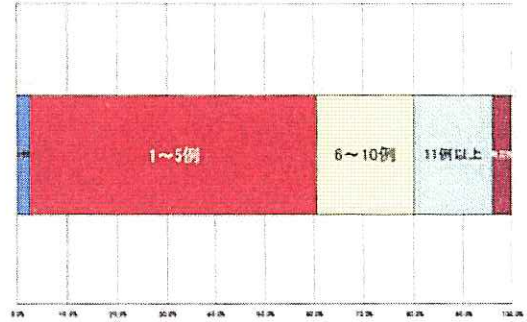
平成17年度「臨床研修に関する調査」調査結果【追加報告】



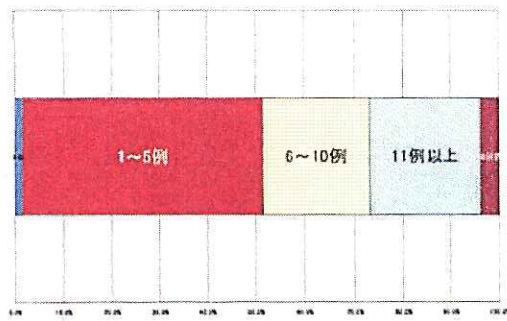
7. めまい



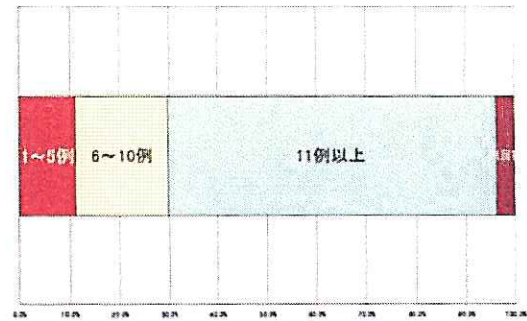
8. 視力障害、視野狭窄



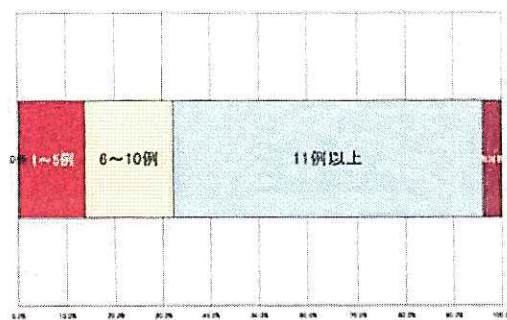
9. 結膜の充血



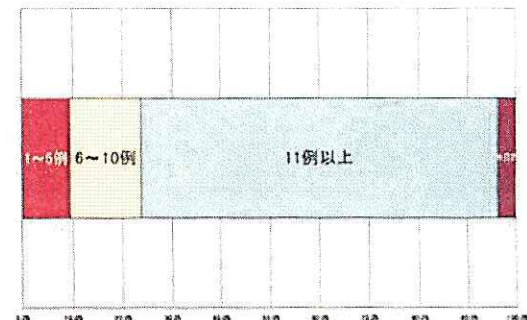
10. 胸痛



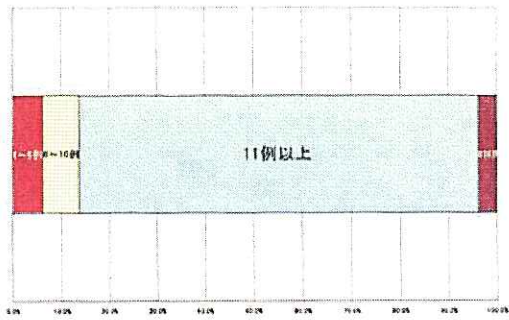
11. 動機



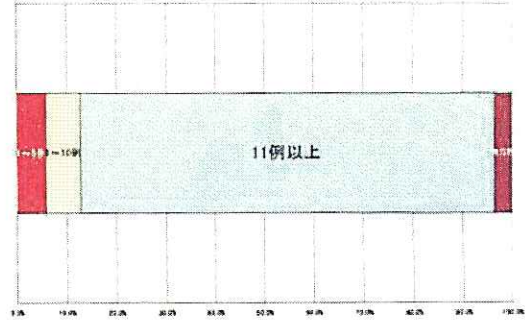
12. 呼吸困難



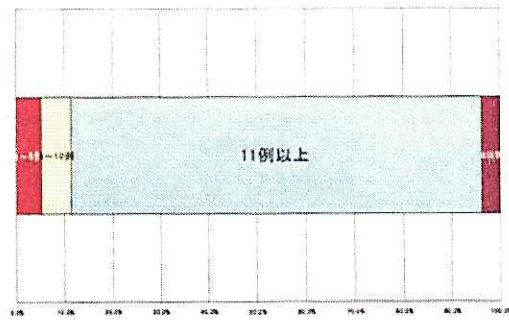
13. 咳・痰



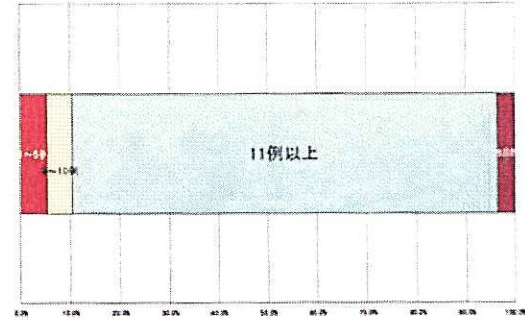
14. 嘔気・嘔吐



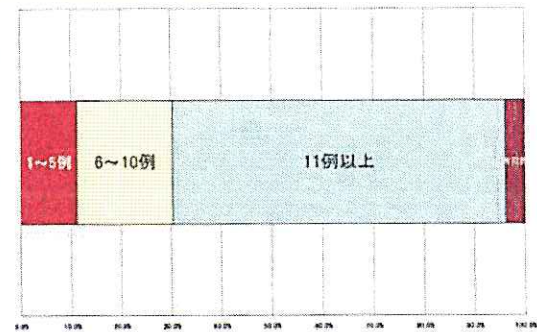
15. 腹痛



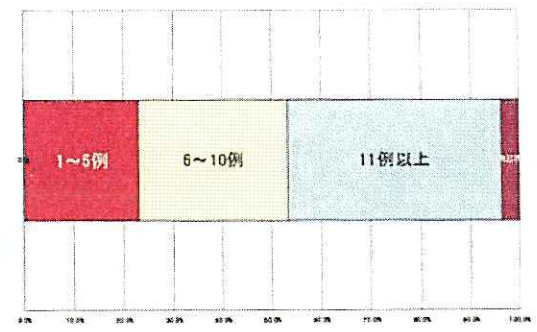
16. 便通異常（下痢、便秘）



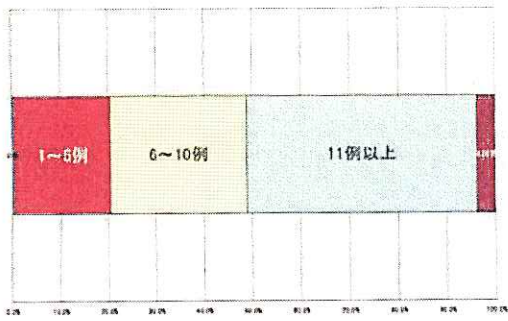
17. 腰痛



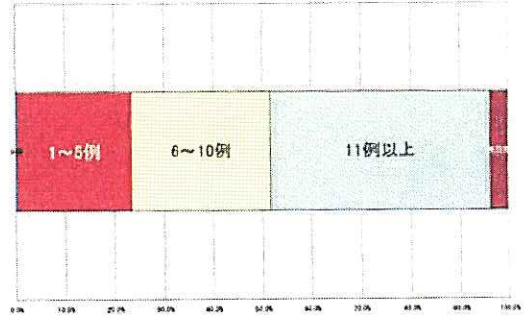
18. 四肢のしびれ



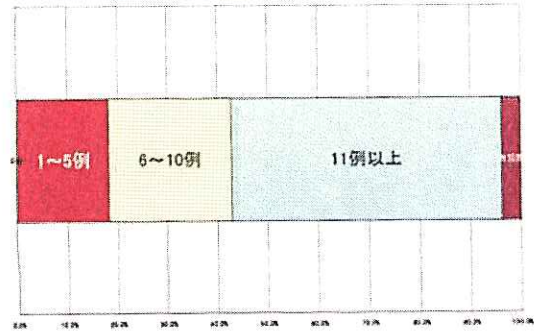
19. 血尿



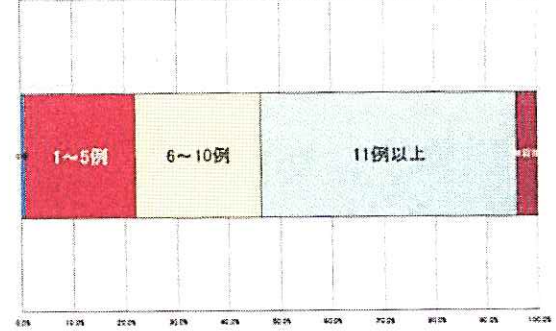
20. 排尿障害



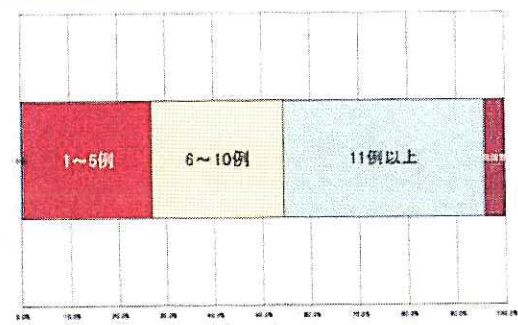
21. 不安・抑うつ



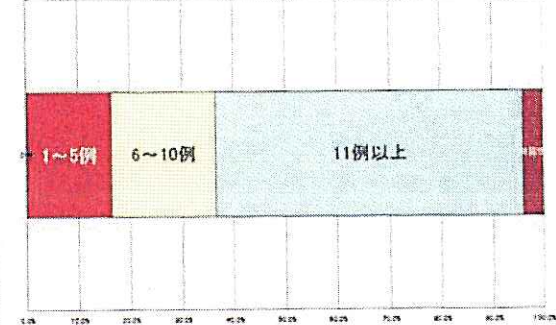
22. 心肺停止



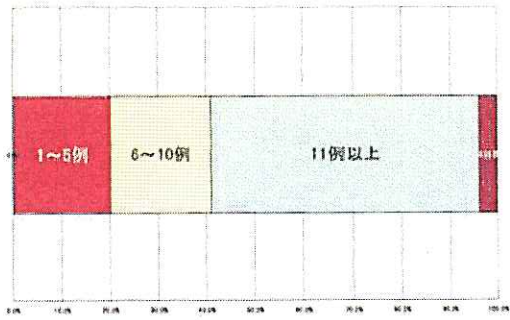
23. ショック



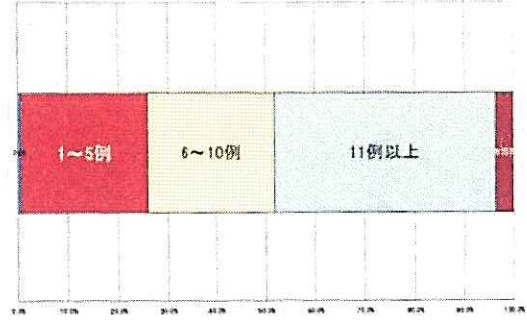
24. 意識障害



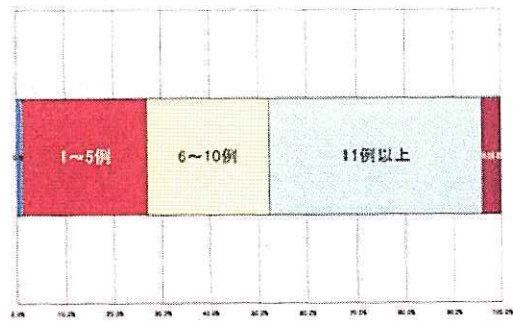
25. 脳血管障害



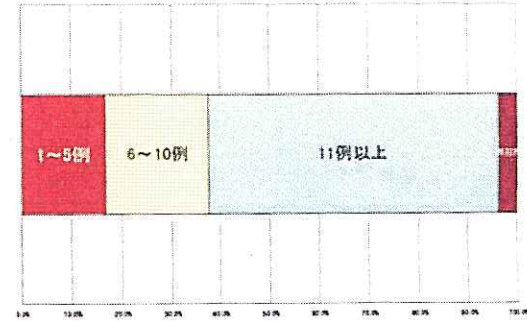
26. 急性心不全



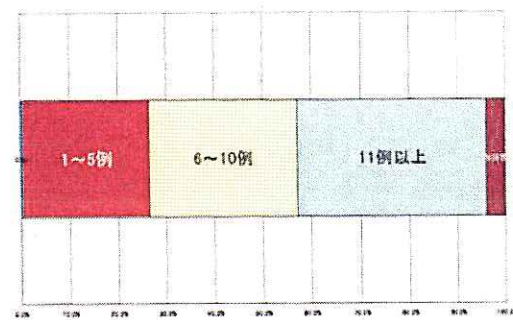
27. 急性冠症候群



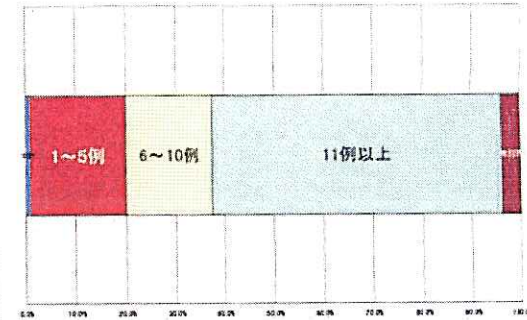
28. 急性腹症



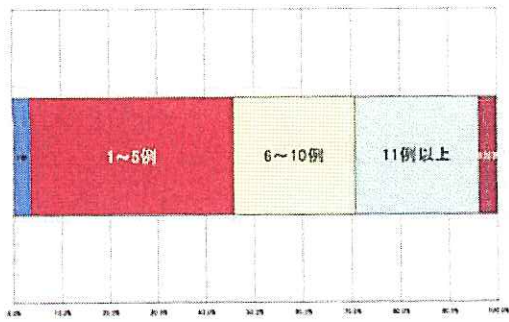
29. 急性消化管出血



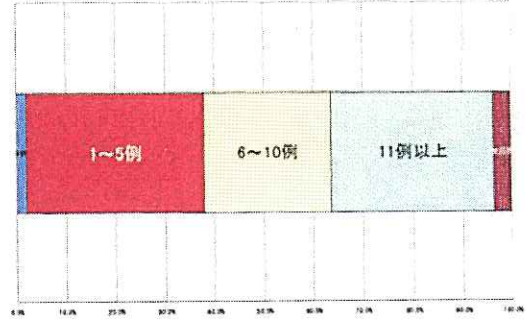
30. 外傷



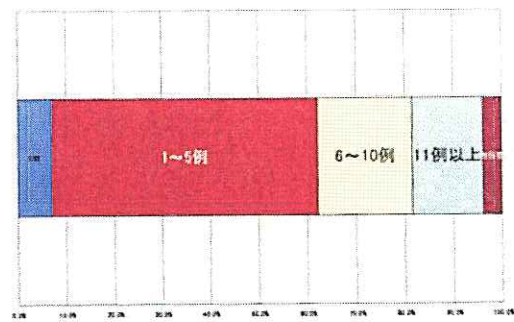
3 1. 急性中毒



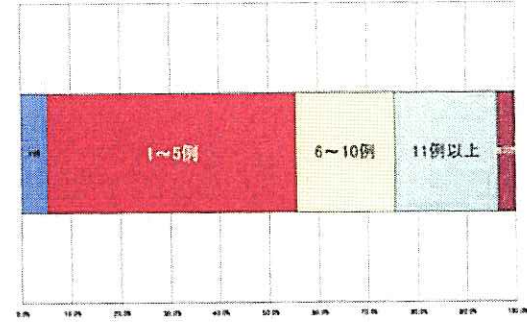
3 2. 誤飲・誤嚥



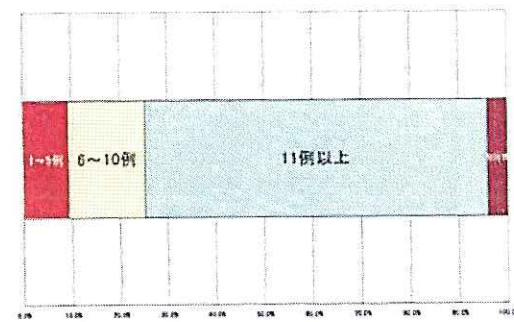
3 3. 熱傷



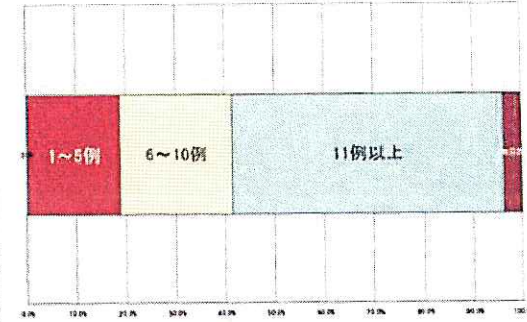
3 4. 自殺企図



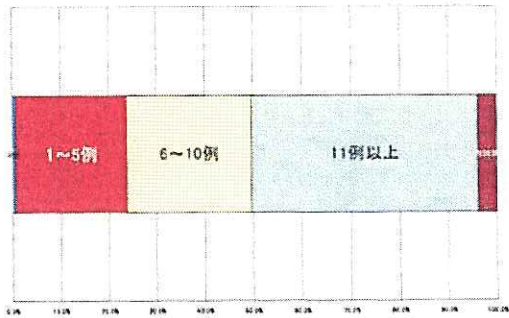
3 5. 貧血 (鉄欠乏性貧血、二次性貧血)



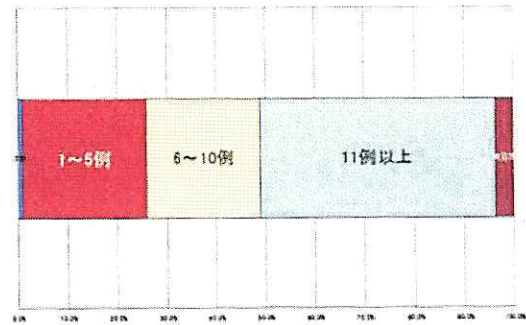
3 6. 脳・脊髄血管障害



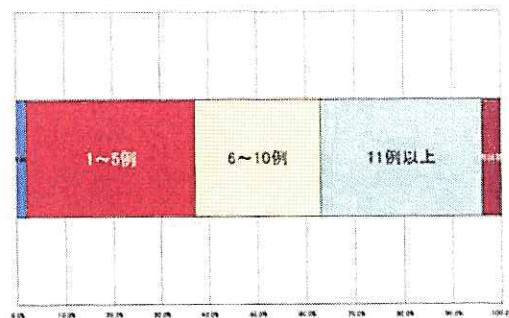
37. 湿疹・皮膚炎群(接触皮膚炎、アトピー性皮膚炎)



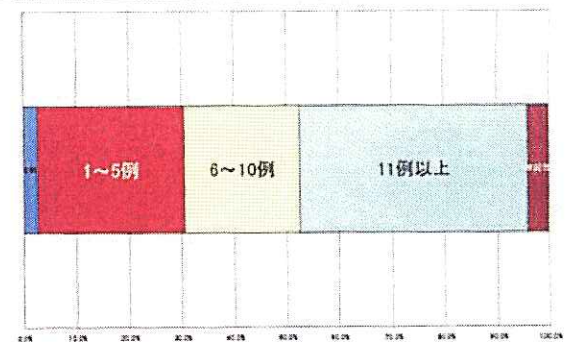
38. 蕁麻疹



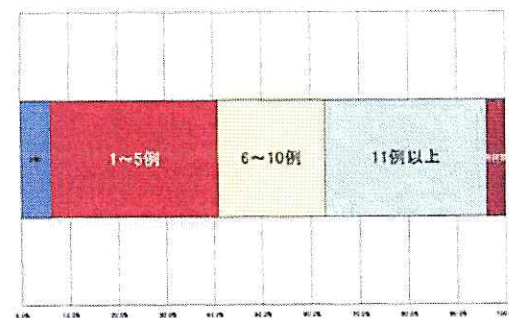
39. 皮膚感染症



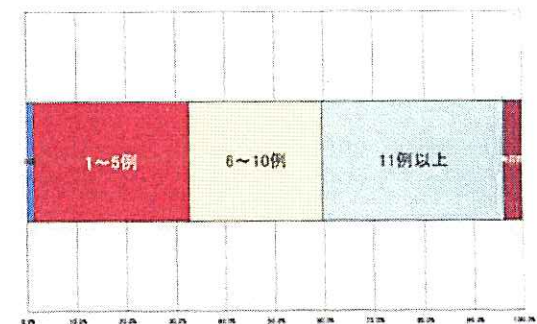
40. 骨折



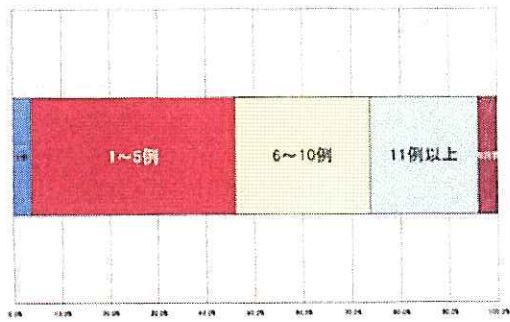
41. 関節の脱臼、亜脱臼、捻挫、靭帯損傷



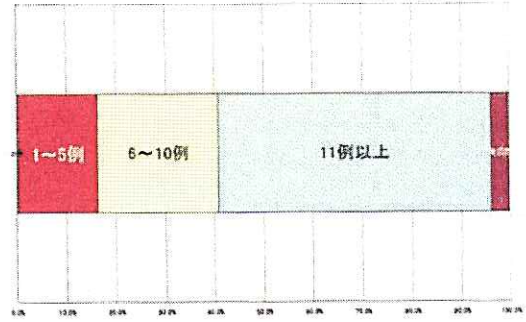
42. 骨粗鬆症



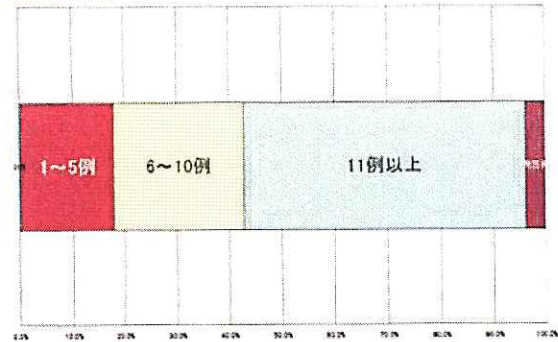
4 3. 脊柱障害(腰椎椎間板ヘルニア)



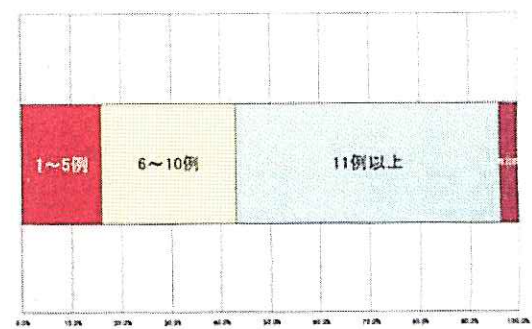
4 4. 心不全



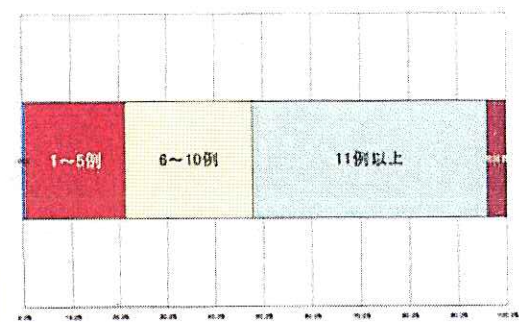
4 5. 狭心症、心筋梗塞



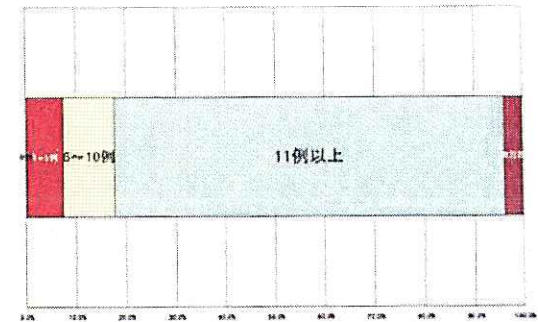
4 6. 不整脈(主要な頻脈性、徐脈性不整脈)



4 7. 動脈疾患(動脈硬化症、大動脈瘤)

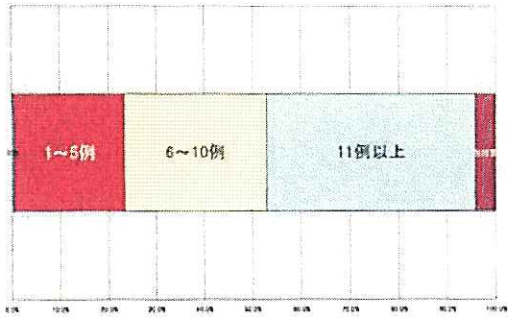


4 8. 高血圧症(本態性、二次性高血圧症)

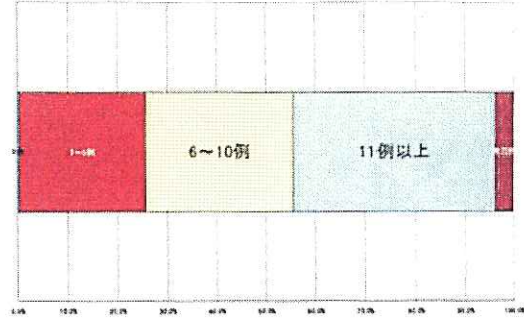


<p>49. 呼吸不全</p>	<p>50. 呼吸器感染症(急性上気道炎、気管支炎、肺炎)</p>
<p>51. 閉塞性・拘束性肺疾患(気管支喘息、気管支拡張症)</p>	<p>52. 食道・胃・十二指腸疾患(食道静脈瘤、胃癌、消化性潰瘍)</p>
<p>53. 小腸・大腸疾患(イレウス、急性虫垂炎、痔核・痔瘻)</p>	<p>54. 肝疾患</p>

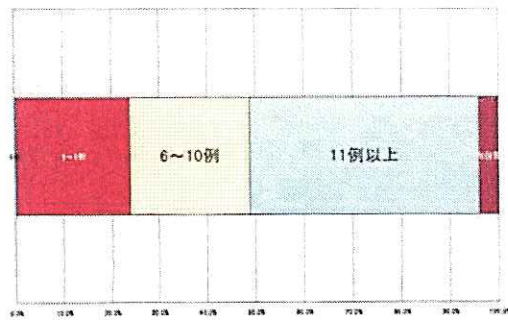
5 5. 横隔膜・腹壁・腹膜



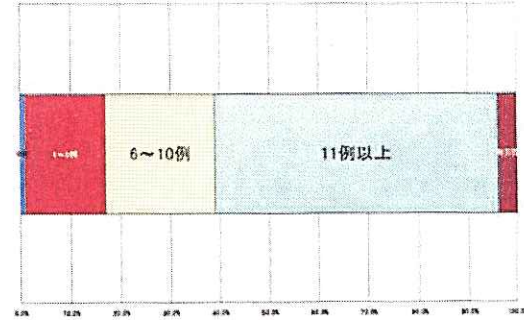
5 6. 腎不全



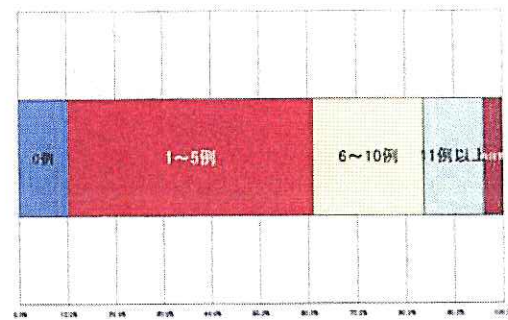
5 7. 泌尿器科的腎・尿路疾患



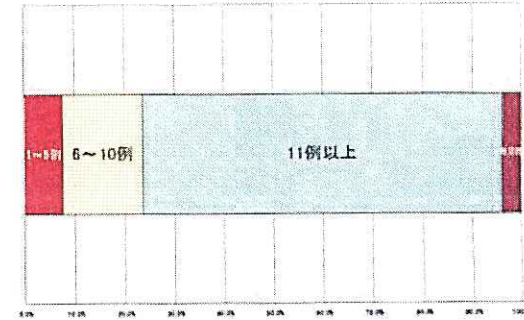
5 8. 妊娠分娩



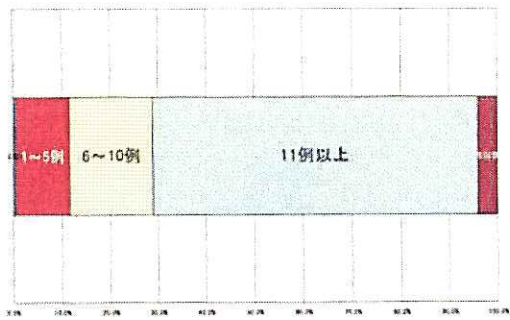
5 9. 男性生殖器疾患



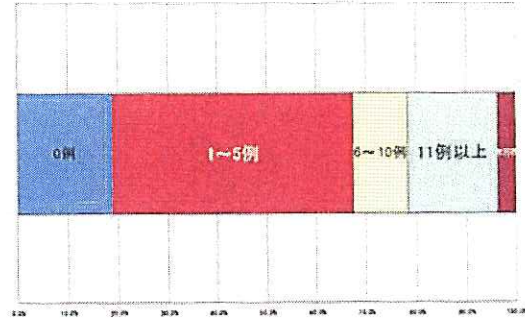
6 0. 糖代謝異常



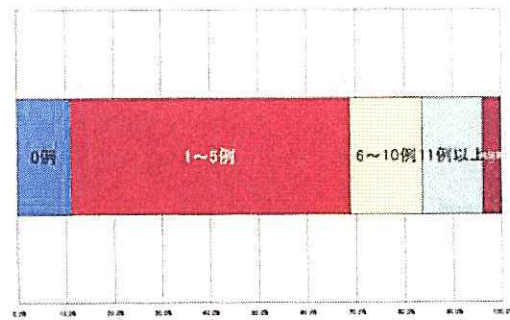
6 1. 高脂血症



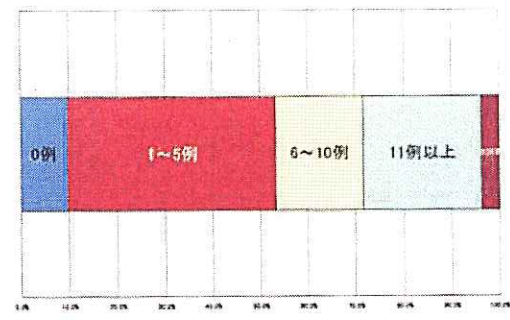
6 2. 屈折異常



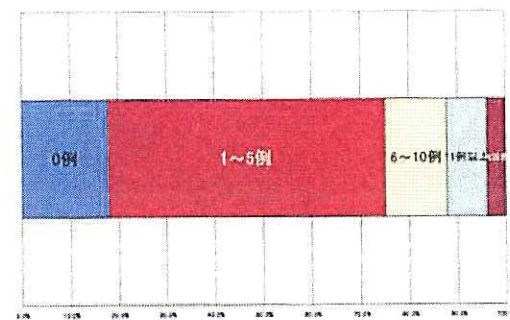
6 3. 角結膜炎



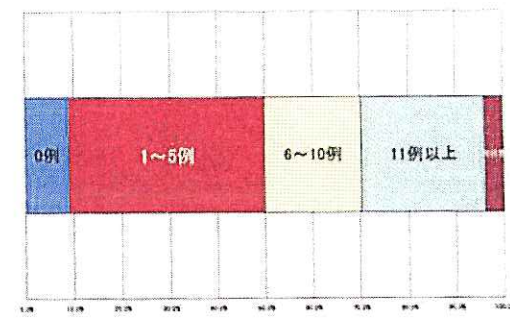
6 4. 白内障



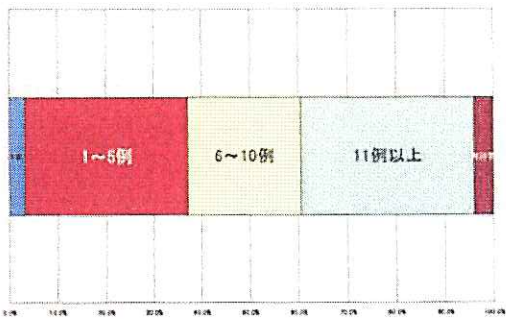
6 5. 緑内障



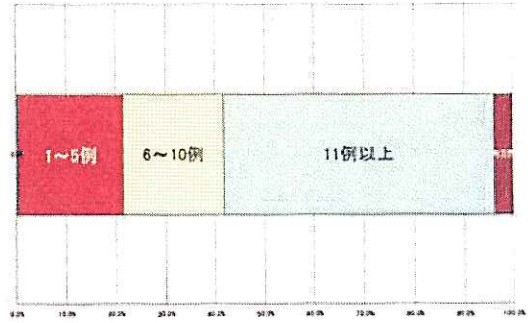
6 6. 中耳炎



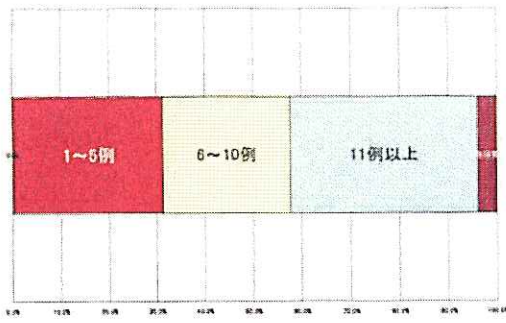
67. アレルギー性鼻炎



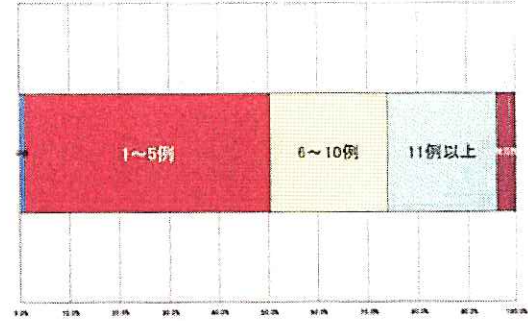
68. 痴呆



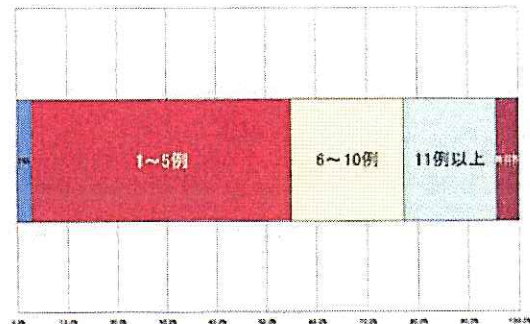
69. うつ病



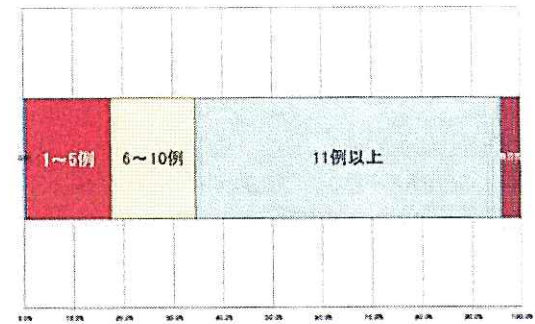
70. 統合失調症



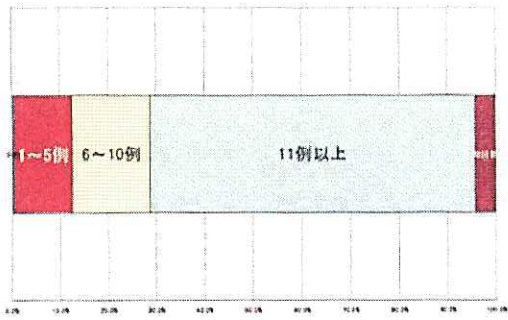
71. 身体表現性障害、ストレス関連障害



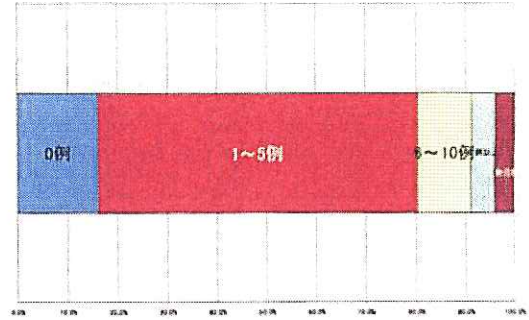
72. ウイルス感染症



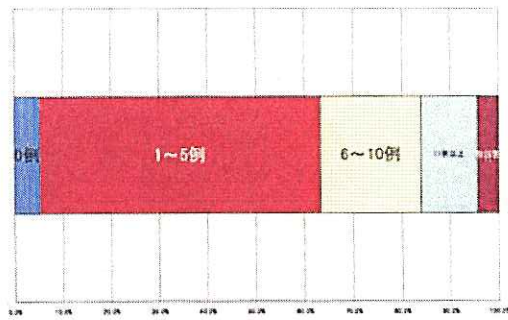
7 3. 細菌感染症



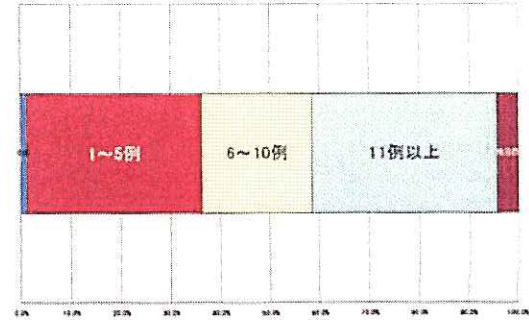
7 4. 結核



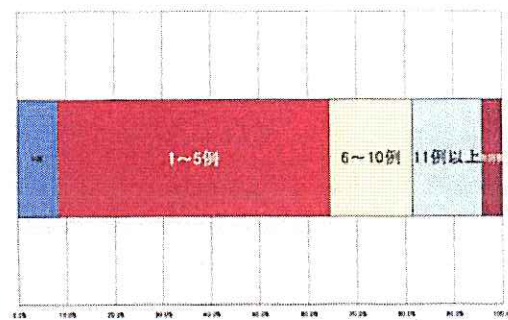
7 5. 慢性関節リウマチ



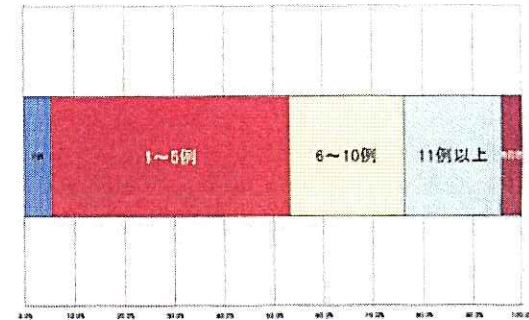
7 6. アレルギー性疾患



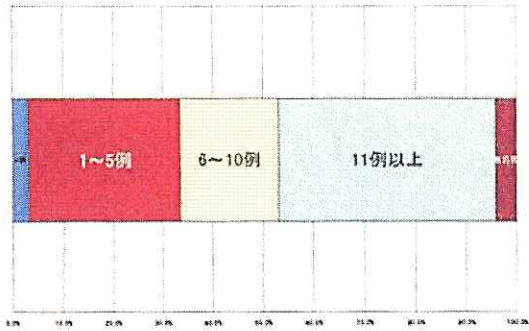
7 7. 熱傷



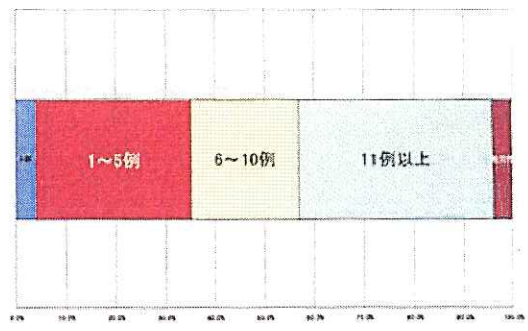
7 8. 小児けいれん性疾患



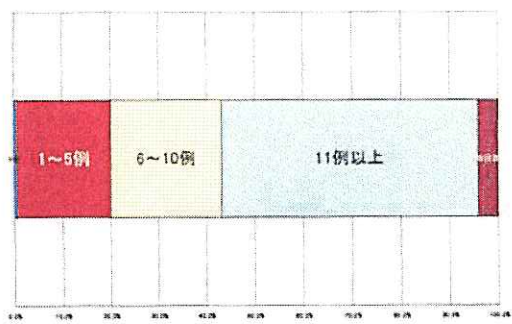
79. 小児ウイルス感染症



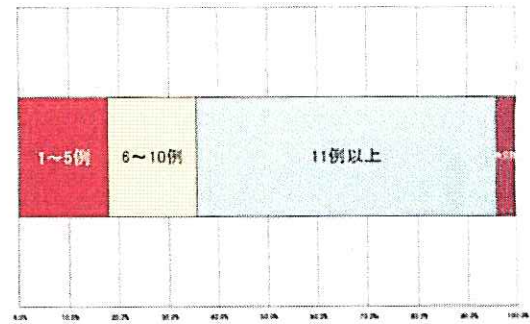
80. 小児喘息



81. 高齢者の栄養摂取障害

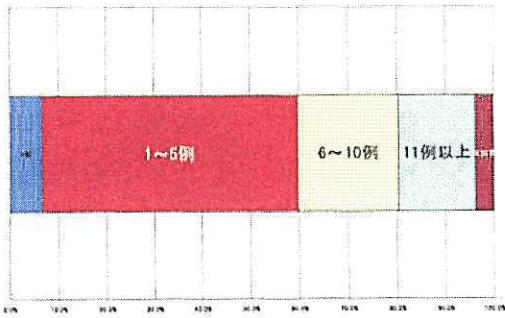


82. 老年症候群

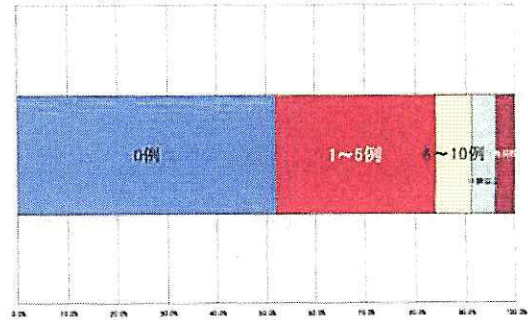


医療記録について

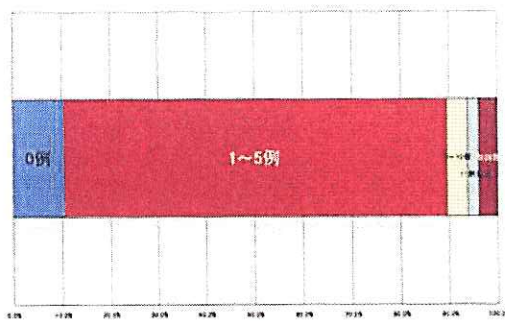
8 3. 死亡診断書



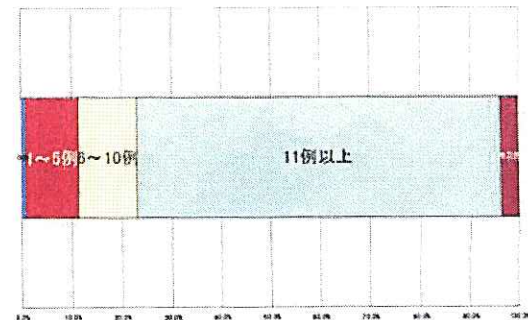
8 4. 死体検案書



8 5. CPC レポート (剖検報告)



8 6. 紹介状



變數	變數名稱	樣數	%	變數	%	變數	%	變數	%
1	1 組織結構	711	31.4	032	54.2	508	33.2	<0.01	0.61
2	2 組織制度	1299	52.6	603	44.6	795	51.6	<0.01	0.11
3	3 轉運	1932	77.9	1017	61.5	915	57.4	<0.01	0.35
4	4 制度	1168	48.4	601	45.3	716	45.5	<0.01	0.77
5	5 資源分配	2136	87.2	1051	60.7	1085	61.5	<0.05	0.08
6	6 組織發展	2112	85.8	1033	62.7	1079	62.3	<0.01	0.19
7	7 組織發展	2122	86.6	1019	64.2	1039	64.6	<0.01	0.49
8	8 心理區分	1659	65.5	956	61.1	924	54.2	<0.01	0.18
9	9 資源分配	875	33.6	595	41.0	597	45.4	<0.01	0.01
10	10 資源分配	1702	66.3	942	61.1	955	62.4	<0.01	0.43
11	11 心理區分	1316	56.1	809	60.6	735	46.6	<0.01	0.18
12	12 組織發展	2358	96.0	1141	68.1	1219	78.2	<0.01	0.30
13	13 資源	1900	71.4	1053	60.8	1016	62.6	<0.01	0.61
14	14 組織發展	718	31.7	580	49.7	493	45.2	<0.01	0.03
15	15 各種教育服務	1451	60.7	852	61.9	951	62.1	<0.01	0.39
16	16 各種教育服務	1536	62.5	916	61.2	917	63.5	<0.01	0.15
17	17 資源	729	29.7	556	47.6	515	45.6	<0.01	0.61
18	18 資源	489	19.9	584	50.0	454	42.6	<0.01	0.00
19	19 資源	792	31.5	241	20.7	275	20.3	<0.01	0.84
20	20 資源	562	22.3	413	40.5	423	38.1	<0.01	0.75
21	21 組織發展	2269	93.1	1233	68.4	1076	67.3	<0.05	0.22
22	22 教育心理	1445	60.7	920	78.2	882	61.4	<0.01	0.19
23	23 教育心理	1524	62.2	871	78.3	856	78.2	<0.01	0.51
24	24 教育心理	1837	74.9	1012	61.4	975	68.9	<0.01	0.29
25	25 MSW	1161	47.5	719	68.3	714	65.2	<0.01	0.58
26	26 MSW	442	18.0	312	31.0	332	30.3	<0.01	0.38
27	27 心理社會	1728	20.5	995	78.2	847	71.4	<0.01	0.65
28	28 心理社會	1142	46.7	716	62.0	625	57.0	<0.01	0.02
29	29 教育心理	1509	61.5	888	78.4	837	78.4	<0.01	0.81
30	30 教育心理	873	35.8	679	58.6	624	57.0	<0.01	0.44
31	31 在家庭	774	31.5	632	54.6	571	52.6	<0.01	0.24
32	32 教育心理	1178	48.1	905	78.0	825	75.3	<0.01	0.12
33	33 教育心理	603	24.6	427	38.8	384	35.1	<0.01	0.39
34	34 教育心理	1849	79.3	918	79.1	881	78.4	0.25	0.70
35	35 教育心理	1837	58.7	770	48.3	738	46.9	<0.01	0.75

