


 Search

- Health Information
- Grants & Funding
- News & Events
- Research & Training
- Institutes at NIH
- About NIH

NIH Home

INSTITUTES, CENTERS & OFFICES

NIH is made up of 27 Institutes and Centers, each with a specific research agenda, often focusing on particular diseases or body systems. NIH leadership plays an active role in shaping the agency's activities and outlook. [Learn more about NIH](#) ▶

NIH OFFICES



The Office of the Director (OD)

The Office of the Director is the central office at NIH for its 27 Institutes and Centers. The OD is responsible for setting policy for NIH and for planning, managing, and coordinating the programs and activities of all the NIH components. OD's program offices include the Office of AIDS Research and the Office of Research on Women's Health, among others. [More about the OD](#) ▶

Quick Links

NCI	NIAMS	NIEHS	CIT
NEI	NIBIB	NIGMS	CSR
NHLBI	NICHD	NIMH	FIC
NHGRI	NIDCD	NIMHD	NCCAM
NIA	NIDCR	NINDS	NCRR
NIAAA	NIDDK	NINR	CC
NIAID	NIDA	NLM	OD

NIH INSTITUTES



National Cancer Institute (NCI) – Est. 1937

NCI leads a national effort to eliminate the suffering and death due to cancer. Through basic and clinical biomedical research and training, NCI conducts and supports research that will lead to a future in which we can prevent cancer before it starts, identify cancers that do develop at the earliest stage, eliminate cancers through innovative treatment interventions, and biologically control those cancers that we cannot eliminate so they become manageable, chronic diseases. [More about NCI](#) ▶



National Eye Institute (NEI) – Est. 1968

NEI conducts and supports research that helps prevent and treat eye diseases and other disorders of vision. This research leads to sight-saving treatments, reduces visual impairment and blindness, and improves the quality of life for people of all ages. NEI-supported research has advanced our knowledge of how the eye functions in health and disease. [More about NEI](#) ▶



National Heart, Lung, and Blood Institute (NHLBI) – Est. 1948

NHLBI provides leadership for a national program in diseases of the heart, blood vessels, lung, and blood; blood resources; and sleep disorders. Since October 1997, the NHLBI has also had administrative responsibility for the NIH Woman's Health Initiative. The Institute plans, conducts, fosters, and supports an integrated and coordinated program of basic research, clinical investigations and trials, observational studies, and demonstration and education projects. [More about NHLBI](#) ▶



National Human Genome Research Institute (NHGRI) – Est. 1989

NHGRI is devoted to advancing health through genome research. The Institute led NIH's contribution to the Human Genome Project, which was successfully completed in 2003 ahead of schedule and under budget. Building on the foundation laid by the sequencing of the human genome, NHGRI's work now encompasses a broad range of research aimed at expanding understanding of human biology and improving human health. In addition, a critical part of NHGRI's mission continues to be the study of the ethical, legal and social implications of genome research. [More about NHGRI](#) ▶



National Institute on Aging (NIA) – Est. 1974

NIA leads a national program of research on the biomedical, social, and behavioral

See Also

- [Directors of NIH Institutes and Centers](#)
- [Mailing Addresses for NIH Institutes and Centers](#)

Event Series

- [NIH Calendar of Events](#)
- [The NIH Director's Wednesday Afternoon Lecture Series](#)
- [Friday Director's Seminar Series](#)
- [Behavioral and Social Sciences Seminar Series](#)
- [Clinical Center Grand Rounds](#)
- [Deputy Director for Management \(DDM\) Seminar Series](#)
- [Integrative Medicine Research Lecture Series](#)
- [Medicine for the Public Lecture Series](#)
- [NIH Neuroscience Seminar Series](#)
- [NCI-Frederick/ Ft. Detrick Distinguished Scientist Lecture Series](#)
- [Women's Health Seminar Series](#)

NIH Fact Sheets

- [Pandemic Flu and Avian Influenza](#)
- [Nanotechnology at NIH](#)
- [Public Access](#)
- [Menopausal Hormone Therapy](#)
- [Special Interest Archive](#)

Related Information

[More News and Events Sources on Institute and Center Web Sites](#)

[▲ Up to top](#)

This page last reviewed on May 24, 2011

[+](#) [Bookmark & Share](#) [@](#) [E-mail Updates](#) [RSS](#) [RSS Feeds](#) [⚙](#) [Get Widgets](#) [🎵](#) [Multimedia](#) [📻](#) [NIH Radio](#) [🐦](#) [Twitter](#) [f](#) [Facebook](#) [📺](#) [YouTube](#)

[NIH Home](#) | [Contact Us](#) | [Privacy Notice](#) | [Disclaimer](#) | [Accessibility](#) | [Site Map](#) | [Search](#) | [FOIA](#) | [OIG](#) | [FAQ](#)

[U.S. Department of Health and Human Services](#) | [USA.gov - Government Made Easy](#)

National Institutes of Health (NIH), 9000 Rockville Pike, Bethesda, Maryland 20892

"NIH...Turning Discovery into Health" is a trademark of the U.S. Department of Health and Human Services.



Health Information

Grants & Funding

News & Events

Research & Training

Institutes at NIH

About NIH

NIH Home

NEWS & EVENTS

News & Events

- [News Releases](#)
- [Special Events](#)
- [NIH Calendar of Events](#)
- [NIH News in Health](#)
- [NIH Research Matters](#)
- [NIH Record](#)
- [NIH Radio](#)
- [NIH Podcasts](#)
- [Newsletters & Feeds](#)
- [Multimedia](#)
- [NIH VideoCasting](#)

NEWS RELEASES

[News Release Archive](#) | [Subscribe](#) | [RSS Feed](#) | [\(What is RSS?\)](#)

- May 24, 2011
Mexican flu pandemic study supports social distancing
- May 24, 2011
Comparable effectiveness shown for two common sudden deafness treatments
- May 23, 2011
NIH study finds increased death risk for early term births
- May 16, 2011
Breast cancer risk calculator updated for Asian-Americans
- May 16, 2011
Certain bacteria render mosquitoes resistant to deadly malaria parasite
- May 13, 2011
Altruistic decision making focus of NIDA's Addiction Science Award
- May 12, 2011
NIH-funded study finds sickle cell treatment safe for young children
- May 12, 2011
Healthy Vision Month, May 2011
- May 12, 2011
Treating HIV-infected people with antiretrovirals significantly reduces transmission to partners
- May 11, 2011
National HIV Vaccine Awareness Day May 18, 2011
- May 9, 2011
NIH, MusiCares, GRAMMY Foundation announce 2011 Teen contest
- May 6, 2011
Martha J. Somerman, D.D.S., Ph.D., named director of the National Institute of Dental and Craniofacial Research
- May 3, 2011
World Asthma Day: NIH research advances help people with asthma

SPECIAL EVENTS

[Special Events Archive](#) | [Guidelines](#) | [NIH Calendar of Events](#)

- May 24, 2011
Challenging Depression: New Insights into Research and Treatment
- June 13, 2011
NIAMS 25th Anniversary Scientific Symposium: Improving Lives Through Discovery
- October 4-5, 2011
NHLBI Symposium on Cardiovascular Regenerative Medicine

Quick Links

- [NIH News in Health](#)
- [NIH Research Matters](#)
- [nih record](#)
- [NIH Radio](#)

For the Press

- [NIH Videocasting](#)
- [Pre-embargo Releases \(*Eurekalert.org*\)](#)
- [Media Contacts](#)
- [Pick-up Articles \(*NIH Research Matters*\)](#)
- [MP3 Audio Reports \(*NIH Radio*\)](#)
- [NIH Photos](#)
- [Weekly Media Tip Sheet \(*NIH Highlights and Headlines*\)](#)
- [Health Newsletter \(*NIH News in Health*\)](#)

Special Interest

- [Feedback NIH](#)
- [Senate Testimony on Stem Cell Research](#) (PDF, 80 KB)
- [NIH Statement Regarding Stay of Stem Cell Injunction](#)
- [NIH Director's Response to Stem Cell Injunction](#)
- [Advances in Medical Imaging](#)
- [ARRA News Releases](#)
- [ARRA—NIH Research and the American Recovery & Reinvestment Act](#)
- [Stem Cell Information](#)
- [Budget Documents](#)
- [NIH Disease Funding](#)


 Search

- Health Information
- Grants & Funding
- News & Events
- Research & Training
- Institutes at NIH
- About NIH

NIH Home

HEALTH INFORMATION



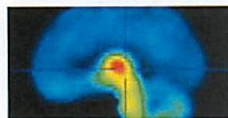
Health Information

- [Health Topics A-Z](#)
- [Clinical Trials](#)
- [Medline Plus](#)
- [Health Info Lines](#)
- [NIH Publications List](#)
- [Child & Teen Health](#)
- [Men's Health](#)
- [Women's Health](#)
- [Minority Health](#)
- [Seniors' Health](#)
- [Wellness & Lifestyle](#)
- [Editorial Policy](#)



Healthy Lifestyles

Schizophrenia often strikes between ages 18 and 22. Learn about coping with the disorder.



Research in Action

Study shows how secondhand smoke affects brain function.



Now Online

Media-Smart Youth teaches tweens to think about how media messages impact health.

Search Health Topics

Health Topics A-Z

A	B	C	D	E	F	G	H	I
J	K	L	M	N	O	P	Q	R
S	T	U	V	W	X	Y	Z	

[View all health topics](#)

Stay informed!

Subscribe to the free, weekly *NIH Health Information Spotlight*

Help Us Improve

What health topics would you like to see included on this site? Please submit your ideas, feedback, and comments.

NIH Radio

MP3 audio reports from the National Institutes of Health, your reliable source for health information

E-mail Updates

Sign up to receive main Health Information page e-mail updates

BROWSE HEALTH CATEGORIES

Body Location/Systems

- Blood/Lymphatic System
- Bones, Joints and Muscles
- Brain and Nervous System
- Digestive System
- Ear, Nose, and Throat
- Endocrine System (Hormones)
- Eyes and Vision
- Heart and Circulation
- Immune System
- Kidney and Urinary System
- Lungs and Breathing
- Mental Health and Behavior
- Mouth and Teeth
- Reproduction and Sexual Health
- Skin, Hair, and Nails

Health and Wellness

- Environmental Health
- Food, Nutrition and Metabolism
- Substance Abuse
- Wellness & Lifestyle

Conditions/Diseases

- Cancers
- Genetics/Birth Defects
- Infections
- Injuries and Wounds

Procedures

- Procedures and Therapies
- Symptoms and Manifestations

RELATED LINKS

Health Information on the Web

- [MedlinePlus Guide to Healthy Web Surfing](#)
- [Finding Reliable Health Information Online](#)
- [How To Evaluate Health Information on the Internet](#)

Health Newsletters

- *NIH News in Health* – A monthly newsletter containing practical health information based on research conducted either by NIH's own scientists or by our grantees at universities and medical schools around the country.

FLU.GOV

Know what to do about the flu.

[VISIT FLU.GOV](http://flu.gov)

[SHARE THIS WIDGET](#)

National Institutes of Health

NIH...Turning Discovery into Health

 Search

- Health Information
- Grants & Funding
- News & Events
- Research & Training
- Institutes at NIH
- About NIH

NIH RESEARCH Matters

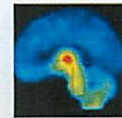
Stay informed with this weekly update of NIH research highlights.

[More ▶](#)

1 2 3 4 5



IN THE NEWS



Secondhand Smoke
Exposure in enclosed spaces can alter brain function.
Posted on May 19, 2011



Baby Boomers Behind the Wheel
Awareness of age-related changes may improve road safety.
Posted on May 12, 2011



Early Autism Detection
New screening allows diagnosis in children as early as 1 year old.
Posted on May 5, 2011

[For the Press](#) [Newsletters & Feeds](#)

- NIH at a Glance
- Funding for Research
- Labs at NIH
- Training at NIH

NIH is the nation's medical research agency—supporting scientific studies that turn discovery into health.

[Mission](#) | [Organization](#) | [Jobs at NIH](#) | [Visitor Information](#) | [Common Questions](#)



THE NIH DIRECTOR



- Biographical Sketch
- Photo Gallery
- Video & Sound Gallery
- Budget Statements
- Perspectives on NIH Science — Articles by Dr. Collins

Dr. Francis S. Collins, NIH Director

[More ▶](#)

Health Topics A-Z



Browse or search an extensive list of consumer health topics

Clinical Trials



Search a registry of federally and privately supported clinical research studies

Feedback NIH



Provide input on important issues that affect NIH, the biomedical research community, and human health in general

NIH Research Matters Weekly



The latest science and health news from *NIH Research Matters*

Science Education



Resources and interactive activities for teaching and learning about science

Medical Research Initiatives

- OppNet: Basic Behavioral/Social Research
- Stem Cell Information
- NIH Common Fund
- NIH Fact Sheets
- More Medical Research Initiatives...

- [+ Bookmark & Share](#)
- [@ E-mail Updates](#)
- [RSS Feeds](#)
- [Get Widgets](#)
- [Multimedia](#)
- [NIH Radio](#)
- [Twitter](#)
- [Facebook](#)
- [YouTube](#)